

Bird House Assembly Instructions



Bird House by Cobwebbs Craft Studio Sep 2020

Bird House Assembly Instructions

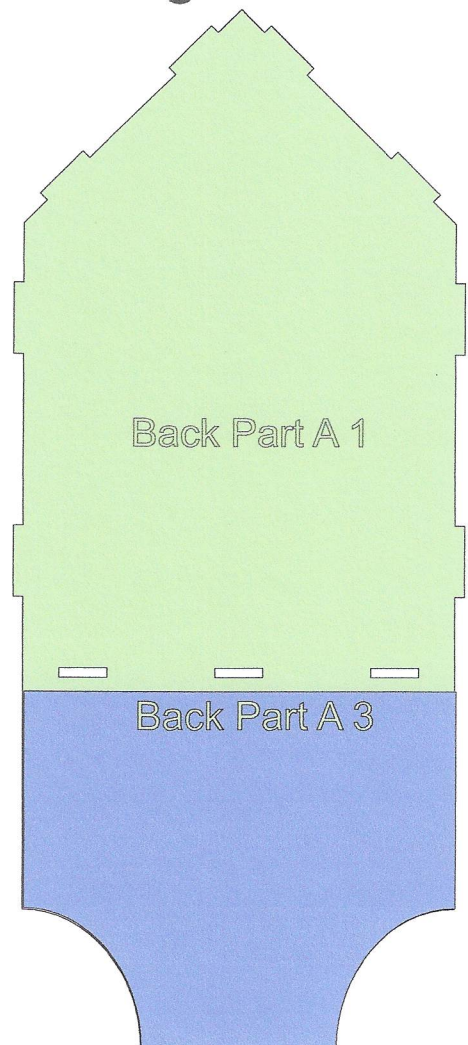
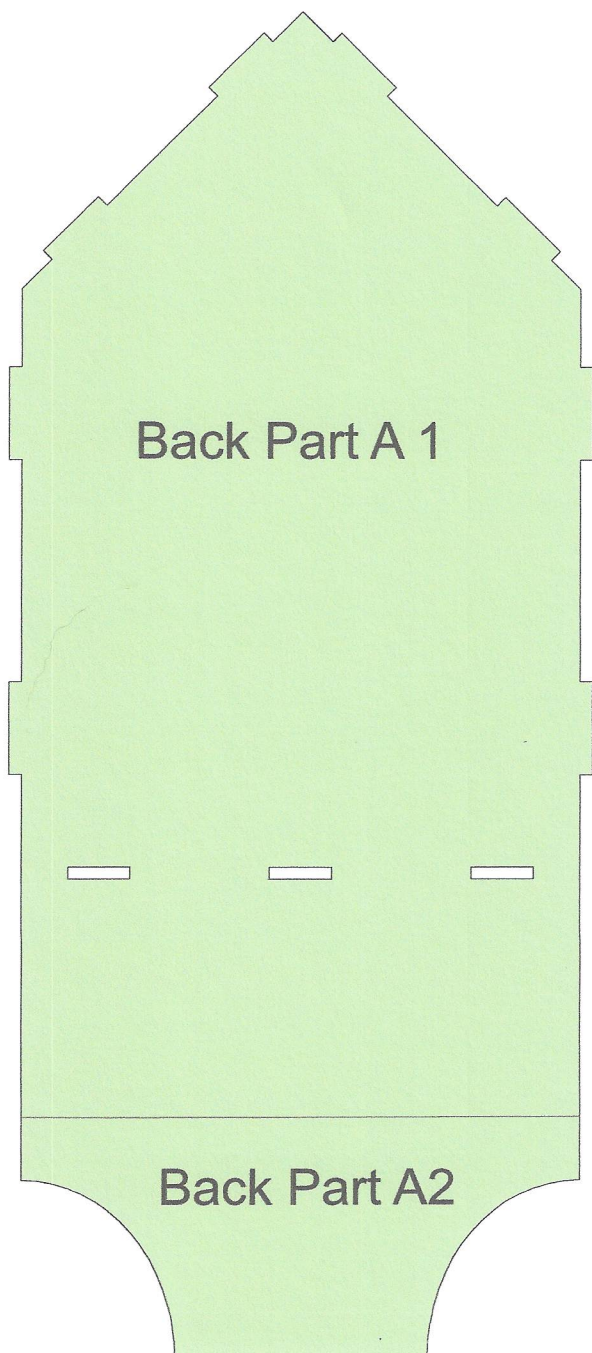
1.. Prepare the Back Side:

Join Back Part A 1 with Back Part A2 using craft glue

2. Place Back Part A 3 aligning with bottom edge

Use Powertex to stick on or craft glue

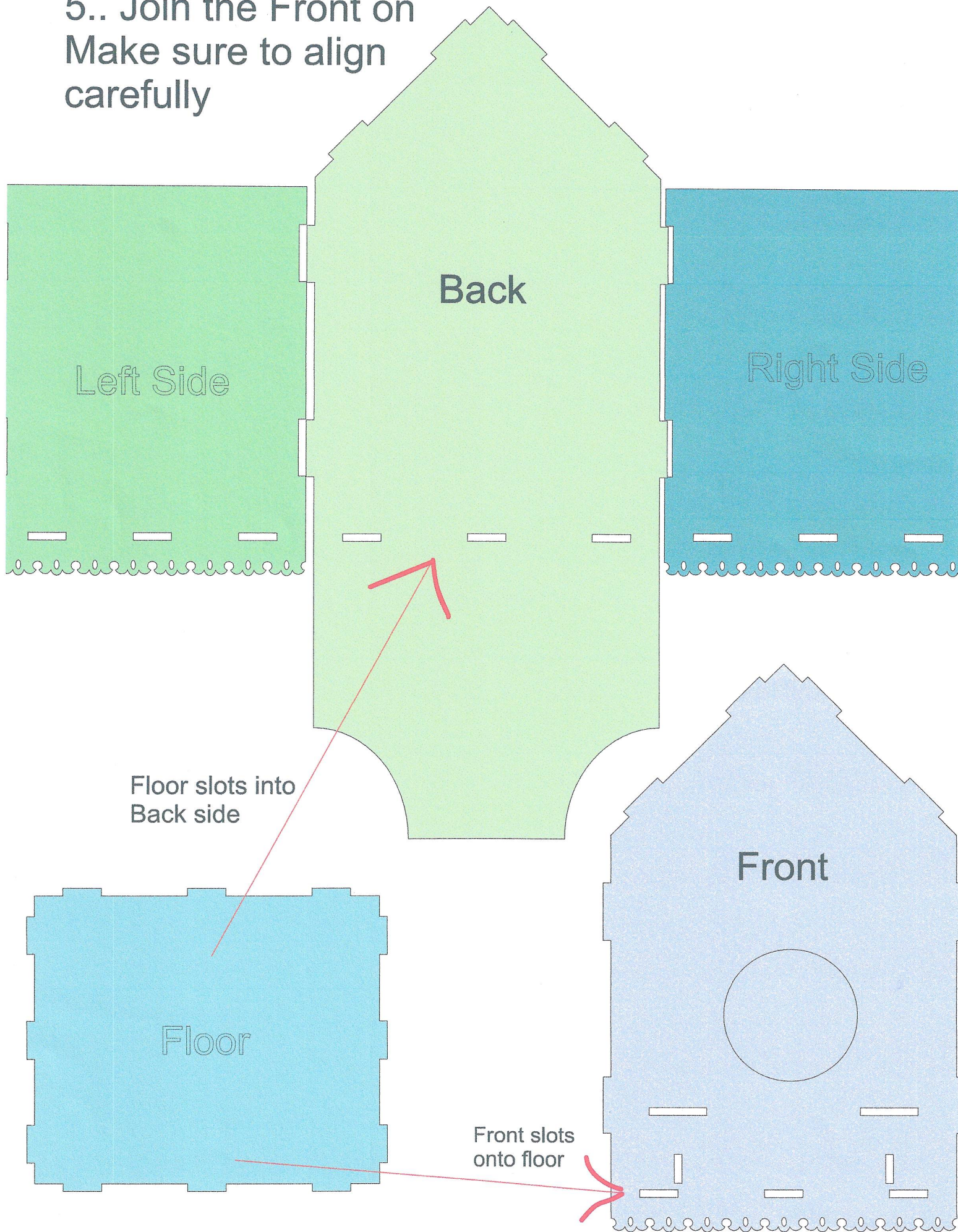
Let it dry



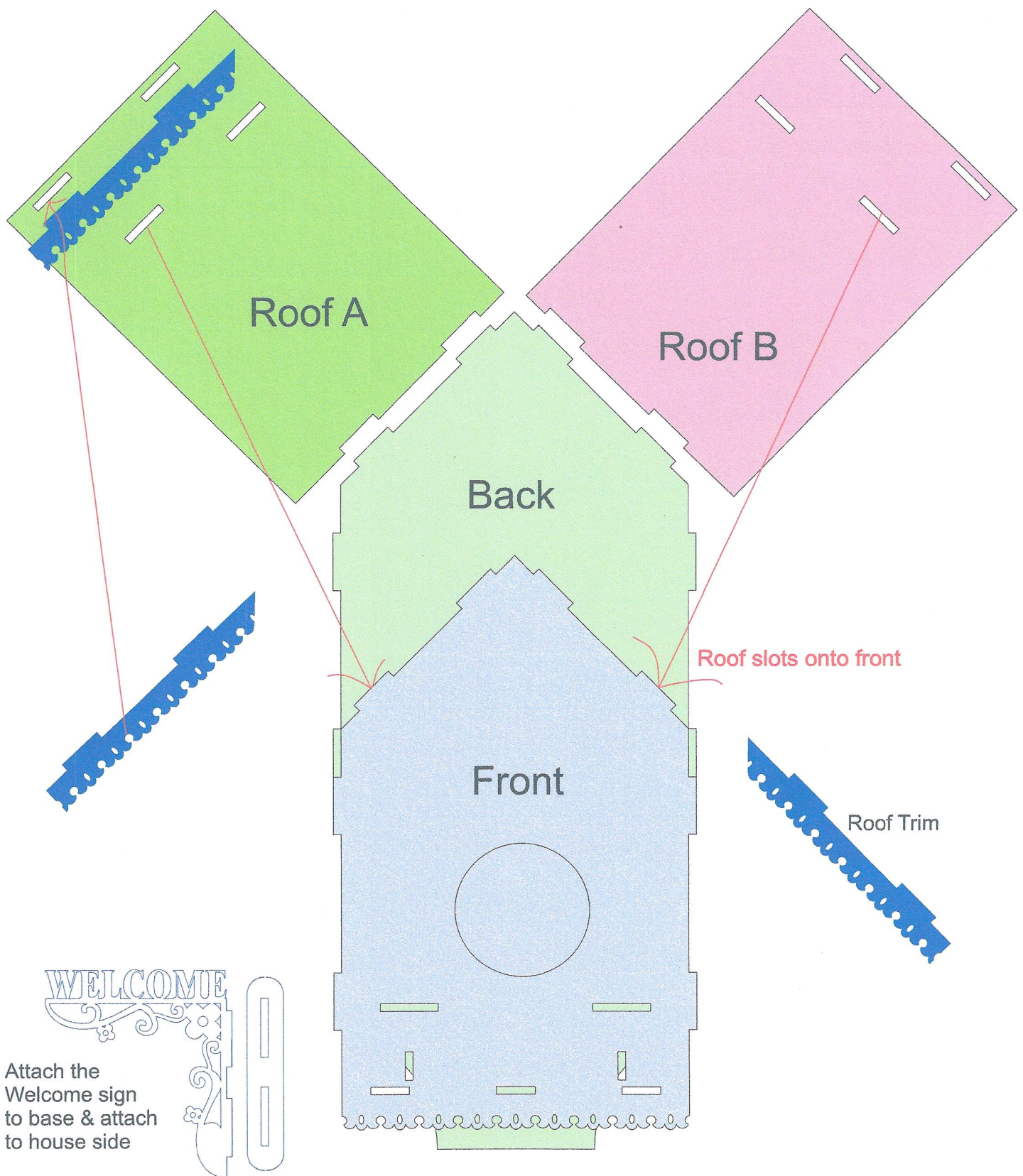
3.. Join the floor to the back

4.. Join the sides to the back & floor

5.. Join the Front on
Make sure to align
carefully



6. Join the roof onto to back & front
7. Join Roof trim to front



8. Join balcony supports to front
9. Join balcony base to supports & front
10. Join balcony trim to base

